



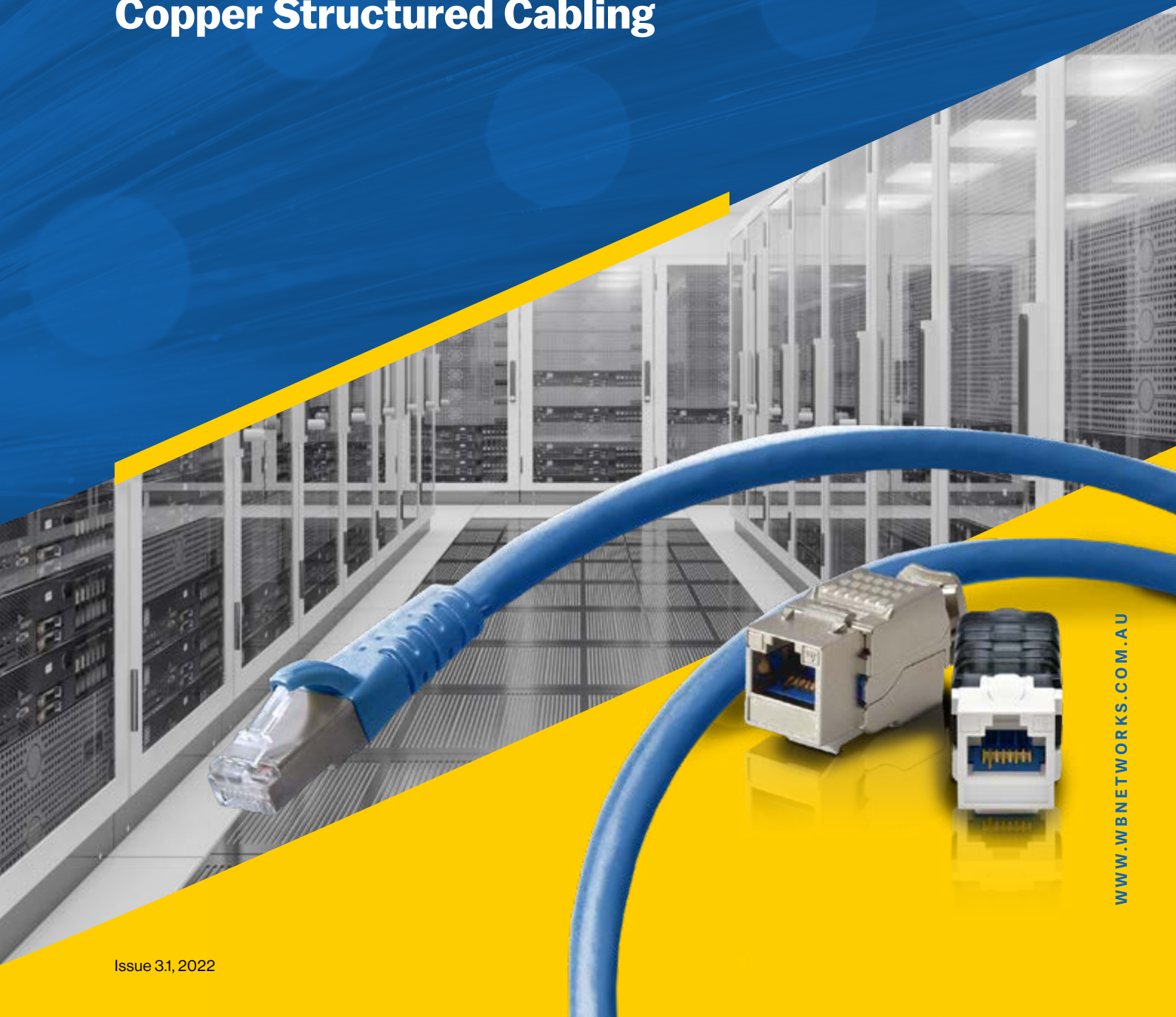
WARREN & BROWN
NETWORKS



HYPACONNECT
INTEGRATED CABLING SOLUTIONS

HypaConnect Integrated Cabling Solution

Copper Structured Cabling





Contents

RJ45 Modular Jacks	4
RJ45 Couplers & Connectors	7
Patch Panels	8
Data Outlets	9
Floor Distributors	11
Patch Cords	12
LAN Cables	14
Cable Management	20
Tools & Accessories	21

Get the leading edge with the HypaConnect HY Series Integrated Cabling Solution



ICT networks support many critical business applications and are a key piece of building infrastructure. As well as supporting current business requirements, ICT networks need to be designed and installed with the view of supporting future bandwidth intensive applications.

The HypaConnect HY series takes your network to the next level by providing industry leading performance, reliability, customer support, as well as improved installation time, thereby reducing the total cost of network ownership.

Get the leading edge for your network with the HypaConnect HY series.

Fast and efficient installation

Termination times for the HY series modular jacks have been significantly reduced, increasing the efficiency of the overall installation and providing a reliable termination. The modular system also allows for easy network deployment, as well as catering for network expansion as the need arises. No network ever stays the same, therefore the HypaConnect ICS is built with manageability, scalability and flexibility in mind.

The HypaConnect ICS is able to reliably support all of today's networking technologies and at the same time cater for the future generations of technology that are always around the corner.

Performance and reliability

HypaConnect ICS products represent the ultimate in high performance component engineering and systems design. In developing the HypaConnect ICS, the technology team set out to create the best performing solution for the delivery of diverse organizational network technologies across a single ubiquitous platform. The HypaConnect ICS represents years of research, testing and development.

The HypaConnect ICS component level specifications exceed the requirements of all global and locally recognized standards, including ISO/IEC, TIA and of course AS/NZS. The HypaConnect ICS combines the highest level of component specifications installed by WBT's highly trained and skilled network of ICS Certified Integrators.

Supported by our 25 year component and optional certified site warranty, you can have peace of mind knowing that your network will perform well into the future.

Global coverage and local customer support

Along with having world class products to do the job, it's the Warren and Brown Technologies local support that really makes the difference. The HypaConnect solution is offered with design and installation support by means of our network of certified consultants and integrators.

The HypaConnect program is based upon the latest standards, technologies and best practices in design, installation and testing, which ensures that every ICS warranted site is comprehensively and professionally delivered.

Furthermore, this level of support is also backed up by stock availability and fast delivery for most common items, ensuring that your network is up and running as quickly and efficiently as possible.

Total building ICT infrastructure support

The Warren & Brown Technologies HypaConnect Integrated Cabling Solution (ICS) supports multiple applications over a single cabling infrastructure. This allows for a simplified network design, using common items and a standard cabling topology.

This innovative approach, simplifies network deployment and operations and reduces costs associated with installing and maintaining multiple cabling networks.

The HypaConnect HY series ICS has been tested and designed to support many ICT applications, as well as PoE and PoE+.



Voice & Data

- LAN
- Internet
- VoIP
- Analogue Phones
- Fax & PBX
- Wi-Fi Access Points



Building Automation

- Lighting (sensors, control panels, etc)
- Fire alarm systems
- Time & Attendance
- Access Control (card & biometric readers)



Security

- CCTV (analog & IP based systems)
- Motion Detectors
- Scan & sensor devices



A/V (Audio & Video)

- LCD Display screens & signage
- CATV
- IPTV
- Inhouse video & broadcast (hotels)
- Intercom
- Overhead Paging



Manufacturing / Industrial

- Infrared sensors
- Machinery control
- Air handlers & ventilation
- Temperature & Humidity sensors
- Remote Control Devices



Other Low voltage systems

- Telemetry
- Nurse Call systems
- Patient Monitoring

Copper and optical fibre infrastructure

The HypaConnect Integrated Cabling Solution (ICS) from Warren & Brown Technologies combines the latest products and solutions from our optical fibre and copper structured cabling portfolios into a single solution offering, backed up by an optional 25 year certified site warranty. Every ICS is designed and tested against the latest version of the ISO/IEC 11801 standard. Combined with our comprehensive HypaConnect certification program, based on best practice, the result is world class performance and reliability.

In addition, the ICS is also backed up by a network of designers, consultants and integrators. All the products contained in this catalogue are suitable for a variety of networks, including but not limited to: voice and data, building automation, security and audio/visual.

The complete end-to-end optical fibre cabling solution is also included in the range of the HypaConnect ICS. Please refer to our optical fibre catalogue or website for more information.



The Warren & Brown HypaConnect ICS warranty

The WBT HypaConnect ICS provides performance defined by the relevant cabling standards at the time of the design. For example, if the system is made up of category 6A cables and connectors, is designed and tested against the latest version of the ISO/IEC 11801, at the completion of the project, the system is guaranteed to deliver performance to this standard for the life of the warranty.

Features and conditions of the HypaConnect ICS Warranty:

- 25-year component and optional certified site warranty. Please refer to the HypaConnect warranty T&C's for eligibility
- Covers both copper and optical fibre infrastructures
- Includes the replacement cost of ICS components and labour in the event of a valid warranty claim
- Is designed, installed and tested by WBT HypaConnect Certified Integrators, who have successfully completed the ICS Training program. WBT have certified integrators that are able to integrate the myriad of networks and technologies onto the ICS
- Is comprised entirely of WBT ICS products, which are factory backed by the manufacturer
- The installed link must pass the field test according to the relevant standards (test equipment is specified to make it even more convenient)
- Channel Warranty must also include WBT patch cords at time of installation

For further info BT technical sales consultants.



RJ45 modular jacks

HypaConnect modular RJ45 jacks meet and exceed technical specifications outlined in ISO/IEC 11801. Featuring a simplified and fast termination method, the HY and H2 series RJ45 modular jacks are user friendly and provide excellent performance and reliability. Suitable for a variety of cable types, these RJ45 jacks, are a versatile and reliable solution for a variety of network applications.

Category 6A UTP modular jack (unshielded)

HypaConnect category 6A UTP modular jacks have been designed to simplify and accelerate network deployment. These unshielded modular jack/outlets, meet or exceed ISO/IEC 11801 system performance for Class EA networks (10G, 500MHz) and category 6A connectivity. Used with unshielded cable (U/UTP), these modular jacks are easy to install in modular patch panels, wall outlets or floor distributors.

- Toolless, easy and fast to terminate options available
- Easy visual inspection of the wiring colour code to ensure every connection is correct
- Universal keystone format allowing multiple mounting options
- Optimised printed circuit design for improved high frequency crosstalk performance
- Suitable for PoE and PoE+ applications
- UTP, category 6A unshielded RJ45 modular jack, keystone
- Meets or exceeds ISO/IEC 11801, ANSI/TIA 568-C.2
- ACMA compliant – RCM
- Class EA, 500MHz, 10G



Part No.	Description
66340022WHT	Category 6A unshielded jack, RJ45, with shutter, white, toolless, HZ series



Part No.	Description
66340014	Category 6A unshielded jack, RJ45, black, toolless, HY series
66340015	Category 6A unshielded jack, RJ45, white, toolless, HY series



Part No.	Description
66340024WHT	Category 6A unshielded jack, RJ45, white, toolless, HZ series
66340024BLK	Category 6A unshielded jack, RJ45, black, toolless, HZ series

Category 6A STP modular jack (shielded)

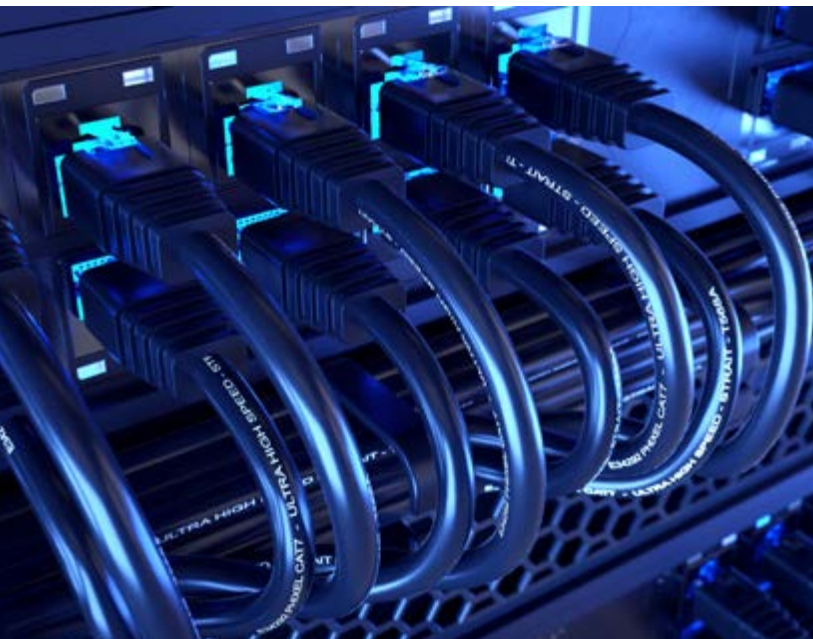
HypaConnect category 6A STP modular jacks have been designed to simplify and accelerate network deployment. These fully shielded modular jacks meet or exceed ISO/IEC 11801 system performance for Class EA networks (10G, 500MHz) and category 6A connectivity. Used with shielded cable (U/FTP, F/UTP or S/FTP), these modular jacks are easy to install in modular patch panels, wall outlets or floor distributors.

CAT6A shielded keystone jacks are designed to easily snap in and out of wall outlets, patch panels and surface mount boxes.

STP CAT6A keystone jacks come with T568A/568B colour label and fully comply with connecting hardware transmission performance of ISO/IEC 11801-1 and ANSI/TIA-568-C.2 for Return loss, Insertion loss, NEXT loss, FEXT loss, TCL, TCTL, PSANEXT loss, and PSAFEXT loss up to 500MHz.

The unique structure provides an efficient and effective method of reducing alien crosstalk from neighbouring connectors.

- Easy visual inspection of the wiring colour code to ensure every connection is correct
- Can be terminated with standard IDC termination tool or with the HY series terminating tool. Toolless, easy and fast to terminate options available (HZ series)
- Universal keystone format allows multiple mounting options
- Optimised printed circuit design for improved high frequency crosstalk performance
- Secure metal contact provides earthing integrity at the patch panel
- ACMA compliant – RCM
- Class EA, 500MHz, 10GSTP, category 6A shielded RJ45 modular jack, keystone



Bezels for installing jacks into outlets are also available separately.



Part No.	Description
66340023BLK	Category 6A shielded jack, RJ45, with shutter, black, HZ series
66340023BLU	Category 6A shielded jack, RJ45, with shutter, blue, HZ series
66340023RED	Category 6A shielded jack, RJ45, with shutter, red, HZ series
66340023WHT	Category 6A shielded jack, RJ45, with shutter, white, HZ series



Part No.	Description
66340013	Category 6A shielded jack, RJ45, keystone, HY series



Part No.	Description
66340027	Category 6A shielded, keystone, toolless, HZ series

Category 6 UTP modular jack (unshielded)

These unshielded modular jacks, meet or exceed ISO/IEC 11801 system performance for Class E networks and category 6 component connectivity. Used with unshielded cable (U/UTP), these modular jacks are easy to install in modular patch panels, wall outlets or floor distributors.

- Equipped with a translucent wire management cap
- Can be terminated with standard IDC termination tool or with the HY series terminating tool
- Easy visual inspection of the wiring colour code to ensure every connection is correct
- Universal keystone format allows multiple mounting options
- UTP, category 6 unshielded RJ45 modular jack
- Meets or exceeds ISO/IEC 11801, ANSI/TIA 568-C.2
- ACMA compliant – RCM
- Class E, 250MHz, 1G



Part No.	Description
66340016	Category 6 unshielded jack, RJ45, black, HY series
66340017	Category 6 unshielded jack, RJ45, white, HY series
66340020	Category 6 unshielded jack, RJ45, toolless, white, HY series



Part No.	Description
66340021BLK	Category 6 unshielded jack, RJ45, black, HZ series, 180° cable entry
66340021WHT	Category 6 unshielded jack, RJ45, white, HZ series, 180° cable entry



RJ45 couplers

The HypaConnect RJ45 couplers are a female to female outlet, which provide a direct connection for RJ45 patch cords. These modular couplers can be mounted directly into patch panels or consolidation points and do not require any field termination. They can be used to provide link extensions and transition between patch cords. They meet performance requirements of ISO/IEC 11801 and are a versatile and reliable solution for a variety of network applications.

Category 6A STP RJ45 coupler (shielded)

The HY series RJ45 category 6A shielded coupler is a female to female outlet, which provides a direct connection between RJ45 patch cords. These fully shielded couplers, are suitable for connecting RJ45 category 6A STP patch cords and meet performance requirements of ISO/IEC 11801, Class EA.

- Category 6A RJ45 coupler female/female
- Applications: cross connect or consolidation point
- Shielded coupler with high EMC performance
- Class EA link performance - 10G, 500Mhz
- Direct connection without tools



Part No.	Description
66222023	Category 6A, shielded coupler RJ45, F-F

Category 6 RJ45 coupler (unshielded & shielded)

The HY series RJ45 category 6 couplers are a female to female outlet, which provide a direct connection between RJ45 patch cords. Available as either shielded or unshielded options, these couplers are suitable for connecting RJ45 patch cords and meet performance requirements of ISO/IEC 11801, Class E.

- Category 6 RJ45 coupler female/female – unshielded
- Category 6 RJ45 coupler female/female - shielded
- Applications: cross connect or consolidation point
- Shielded coupler has high EMC performance
- Class E link performance – 1G, 250Mhz
- Direct connection without tools



Part No.	Description
66222024	Category 6, unshielded coupler RJ45, F-F
66222025	Category 6, shielded coupler RJ45, F-F



Category 6A RJ45 field installable connectors

RJ45 category 6A field installable connectors provide great flexibility in copper cabling networks. Suitable for office networks, data centres or home cabling systems, these connectors can be installed in less than 2 minutes, without any special tools. As well as being able to support PoE and PoE+, these connectors are ideal for network repairs or custom cable lengths.

- Shielded and unshielded connector options
- Suits a variety of copper conductor sizes
- Connector strain relief
- Easy to terminate in less than 2 minutes
- Supreme reliability
- Suitable for PoE and PoE+ applications
- Complies with ISO/IEC 11801
- Used for category 6A, 10G, 500MHz Class EA networks

Category 6A RJ45 connector (shielded)

Part No.	Description
TGJ00026A2110	MFP8 T568A Category 6A, AWG 24/1-22/1, AWG 27/7-22/7, incl. pre-assembled dust protection cap
TGJ00026A2111	MFP8 T568B Category 6A, AWG 24/1-22/1, AWG 27/7-22/7, incl. pre-assembled dust protection cap



Category 6A RJ45 connector (unshielded)

Part No.	Description
TGJ00026A3110	UFP8 T568A Category 6A, AWG 24/1-23/1, AWG 27/7-23/7
TGJ00026A3111	UFP8 T568B Category 6A, AWG 24/1-23/1, AWG 27/7-23/7
TGJ00026A3112	UFP8 T568A Category 6A, AWG 23/1-22/1, AWG 23/7-22/7
TGJ00026A3113	UFP8 T568A Category 6A, AWG 23/1-22/1, AWG 23/7-22/8



Long release latch
Insertion and withdrawal made easy in confined spaces

Adjustable strain relief
Suitable for cable diameters from 5.5-8.5mm

Standardised plug interface
Conforming to IEC 60603-7-41

Piercing contacts
Suitable for conductor cross-sections AWG27/7-22/7; AWG24/1-22/1

Four-chamber wire manager
Available with colour code T568A or T568B

Pre-assembled protection cap
Effective protection of contacts from dirt and damage in transit

A detailed diagram showing the internal components of the connector. It highlights the four-chamber wire manager, the piercing contacts that penetrate the insulation, the strain relief boot, and the pre-assembled dust protection cap. Yellow lines connect the text labels to the corresponding parts of the connector.

Data outlets

Warren and Brown Technologies offer a wide range of Data Outlets which can be used for various applications. Some of the modular data outlets allow for CAT6A AMJ and UMJ modules and couplers to be installed for flexible use.

Data Outlets for CAT5E and CAT6 keystones are also available which allow these to be installed with a bezel.

Modular outlets, standard

Data outlets (telecommunication outlets) are designed to accept HY series category 6 and category 6A jacks. These outlets contain multiple cable entries and can be wall or surface mounted. They are an effective solution for providing an interface between horizontal cabling and equipment patch cords used in workstation areas.

- Unloaded – HY series jacks are purchased separately
- Easy to install, and can be wall or surface mounted
- Single or dual port options



Part No.	Description
66090017	Modular outlet, standard, single port
66090019	Modular outlet, standard, dual port

Modular outlets, shuttered

Modular outlets (telecommunication outlets) are designed to accept HY series category 6A and category 6 jacks. These outlets contain multiple cable entries and can be wall or surface mounted. They are an effective solution for providing an interface between horizontal cabling and equipment patch cords used in workstation areas.

- Unloaded – HY series jacks are purchased separately
- Easy to install, and can be wall or surface mounted
- Single or dual port options
- Shuttered design



Part No.	Description
66090018	Modular outlet, shuttered, single port
66090020	Modular outlet, shuttered, dual port



Wall plates, 8P socket

A mounting plate for installation of one or two modular sockets, on a cavity wall (mounting bracket, available separately). Can also be mounted on a solid wall using a 32mm mounting block. Modular sockets; available separately.

- Mounting plate for installation of modular sockets
- Features a clip-on front cover plate
- The plate can be mounted on a cavity or solid wall
- Supplied as a pack of 10 pcs



Part No.	Description
26800138	Plate, wall 8P socket single (bag of 10)
26800139	Plate, wall 8P socket dual (bag of 10)

Bezels, adaptor for Clipsal wall plates

Used to fit a keystone socket to a Clipsal wall plate.

Part No.	Colour	Description
26800136	White	Bag of 10
26800136BLU	Blue	
26800136GRY	Grey	
26800136GRN	Green	
26800136BLK	Black	
26800136ORN	Orange	



Floor distributors

Floor distributors provide great flexibility in office areas where moves, additions and changes are constantly undertaken. As an intermediary cabling point in a back bone network, floor distributors provide another connection point for housing modular jacks and couplers.

They are suitable as cable distributors or as connection devices for groups of participants in either 6, 8 or 12 port variations.

Floor distributor - modular system

The HY series 6 and 12 port floor distributors, also known as consolidation points (CP), provides great flexibility in office networks for easy Moves, Additions and Changes (MAC's).

It is an additional point in a permanent link, which allows for quick network modifications and is ideal for dynamic work environments.

- Modular solution
- Generally used as an intermediary point between patch panels and wall outlets
- Can be mounted in the ceiling, cabinet, desktop, etc
- 6 port and 12 port options
- Accepts HY series modular jacks or couplers, which are purchased separately



Part No.	Description
66090021	6 port modular floor distributor for hy series jacks or couplers
66090022	12 port modular floor distributor for hy series jacks or couplers

Category 6 floor distributor, 8 ports (unshielded)

The 8 port category 6 unshielded floor distributor, also known as a consolidation point (CP), provides great flexibility in office networks for easy Moves, Additions and Changes (MAC's). It is an additional point in a permanent link, which allows for quick network modifications and is ideal for dynamic work environments.

- Generally used as an intermediary point between patch panels and wall outlets
- Can be mounted in the ceiling, cabinet, desktop, etc
- 8 ports
- Category 6 shielded, 1G ethernet, Class E networks, 250Mhz
- Standards compliant



Part No.	Description
66090023	Category 6 unshielded, 8 port, floor distributor (CP)

Category 6A floor distributor, 8 or 12 ports, RJ45 (shielded)



Part No.	Description
66090024	CAT6A STP floor distributor, 8 ports, RJ45
66090025	CAT6A STP floor distributor, 12 ports, RJ45

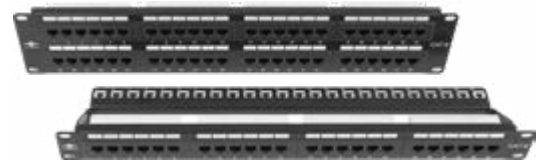
Patch panels

Patch panels are installed in a data or communications rack with 19" mounting rails and provide connectivity for RJ45 category 6 or category 6A data services. HypaConnect HY series modular patch panels are easy to install in any network environment. The rear cable support bar provides a tie down and cable management point for LAN cable and the front patching fields contain a labeling area for identifying connections. HypaConnect patch panels are modular and are provided in loaded and unloaded versions. The unloaded panels perfectly suit the HY series modular jacks, including category 6A STP and category 6A UTP, which are ordered separately. The loaded category 6 UTP patch panels provide direct termination on to the patch panel, by means of an IDC termination tool.

Category 6 loaded patch panel (unshielded, RJ45)

The HypaConnect HY series category 6 UTP Patch panel is easy to install and terminate in any network environment. The rear cable support bar provides a tie down and cable management point for LAN cable and the front patching field contains a labelling area for identifying connections. Available as either a 1RU, 24 Port or 2RU, 48 port versions, the HY patch panel series provides great flexibility for your network. This patch panel is suitable for unshielded cable (U/UTP), which is terminated onto the patch panel using a standard IDC termination tool.

- Category 6 unshielded, loaded patch panel
- Available in 1RU 24 port or 2RU 48 port
- Suitable for 19" mounting formats
- Rear cable management support bar
- IDC connectors for easy termination
- Supports 23AWG cable
- Colour coding for TIA 568 A or B usage
- Steel powder coated panel
- Meets or exceeds ISO/IEC 11801, ANSI/TIA-568-C.2
- ACMA compliant – RCM
- Class E, 250MHz, 1G



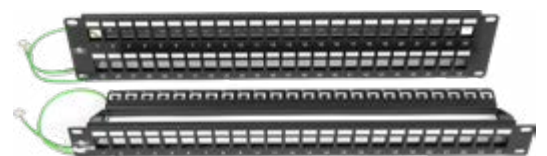
Part No.	Description
TC402-41	Category 6 unshielded 19" loaded patch panel 24 ports 1RU with rear cable management support bar, HY series
TC402-42	Category 6 unshielded 19" loaded patch panel 48 ports 2RU with rear cable management support bar, HY series

Patch panel (shielded, modular, RJ45) for category 6A jacks & couplers

The HypaConnect HY series shielded modular patch panel is easy to install in any network environment. The rear cable support bar provides a tie down and cable management point for LAN cable and the front patching fields contain a labelling area for identifying connections. These patch panels are unloaded and suit the HY series category 6A shielded modular jacks & couplers, which are ordered separately.

These patch panels are provided with all mounting hardware.

- Unloaded patch panel
- Available in 1RU 24 port or 2RU 48 port
- Suitable for 19" mounting formats
- Rear cable management support bar
- Steel powder coated panel
- Suits HY & HZ series modular jacks – category 6A STP
- Suits HY & HZ series couplers



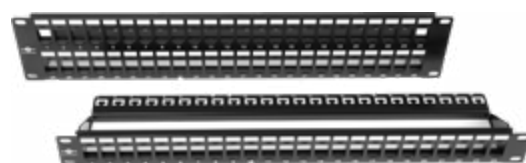
Part No.	Description
TC402-44	1RU, 24 port, modular patch panel with cable support bar, 19" rack mount, unloaded
TC402-46	2RU, 48 port, modular patch panel with cable support bar, 19" rack mount, unloaded

Patch panel (unshielded, modular, RJ45) for category 6 & 6A jacks & couplers

The HypaConnect HY series unshielded modular patch panel is easy to install in any network environment. The rear cable support bar provides a tie down and cable management point for LAN cable and the front patching field contains a labelling area for identifying connections. These patch panels are unloaded and suit the HY series category 6, 6A unshielded modular jacks & couplers, which are ordered separately.

These patch panels are provided with all mounting hardware.

- Unloaded patch panel
- Available in 1RU 24 port or 2RU 48 port
- Suitable for 19" mounting formats
- Rear cable management support bar
- Steel powder coated panel
- Suits HY & HZ series modular jacks – category 6, 6A UTP
- Suits HY & HZ series couplers



Part No.	Description
TC402-43	1RU, 24 port, modular patch panel with cable support bar, 19" rack mount, unloaded
TC402-45	2RU, 48 port, modular patch panel with cable support bar, 19" rack mount, unloaded

19" rack mount angled patch panel

- Angled patch panels ensure proper bend radius control
- Minimizes the need for horizontal cable managers
- Mounts into standard rack with 19" mounting rails
- Accepts HypaConnect modular jacks
- Easy front access to installed modules for moves, adds and changes
- Rear cable support and management
- Vertical cable management options available to suit



Part No.	Description
TC402A0101	1RU – 24 port, black
TC402A0201	2RU – 48 port, black
TC402A0101HC	1RU – 24 port, black

19" rack mount modular patch panel

- High Density - 48 ports in 1RU, RJ45
- Suitable for use with H2 series jacks



Part No.	Description
TC402F0150P	1RU - 48 ports modular patch panel

Patch cords

HypaConnect HY series patch cords provide unparalleled performance and reliability. With solutions in category 6, category 6A unshielded and shielded along with many innovative options, including reduced (mini) diameter patch cords, there is a solution for any application.

Category 6A shielded patch cords, mini, AWG28, U/FTP, LSZH

Category 6A mini shielded patch cords (U/FTP) allow for data transmission between patch panels, outlets and/or IT equipment. Shielded U/FTP patch cords feature individually shielded pairs, providing optimum protection against EMI. The smaller conductor size (AWG28) reduces the overall patch cord diameter, when compared to standard category 6A shielded patch cords, thereby reducing congestion around patching fields and cable managers, providing greater flexibility.

- Snagless moulded patch cords - category 6A – 500 MHz, 10G
- Category 6A shielded – U/FTP
- Available in various lengths
- Suitable for 10G Ethernet
- LSZH outer sheath
- ACMA compliant – RCM
- Meets category 6A channel link transmission performance requirements of ISO/IEC 11801 and ANSI/TIA 568-C.2
- Suitable for PoE & PoE+
- AWG28 copper conductor size
- Patch cord OD – 5.5mm
- Approx. 15-20% smaller in diameter than regular category 6A S/FTP patch cords, which are approx. 6.5mm in OD
- Note - permanent link de-rating required



Length	Part No. 1	2	Colour
0.3m	660821003	+	
0.5m	660821005		BLU Blue
1.0m	66082101		GRY Grey
1.5m	660821015		WHT White
2.0m	66082102		GRN Green
3.0m	66082103		YEL Yellow
5.0m	66082105		RED Red
7.5m	660821075		BLK Black
			PNK Pink
			ORN Orange

Ex. Mini category 6A U/FTP patch cord, 1.5m, blue: P/N 660821015BLU

Category 6A unshielded patch cords, mini, AWG28, U/UTP, LSZH

The Mini CAT6A U/UTP patch cords from WBT, provide a superior solution when compared to standard patch cords. The mini CAT6A unshielded patch cords provide the same high level of performance as standard CAT6A patch cords, with the added benefit of being 50% smaller in diameter. In addition, the flexible LSZH outer sheath enables the patch cords to be easily routed and connected into patching fields. As with all WBT patch cords, the mini CAT6A unshielded patch cords meet all the relevant cabling standards and provide reliable connectivity for Class EA (10Gbps) networks.

- U/UTP cable – unshielded
- Exceeds CAT6A technical and performance specifications as per ISO/IEC 11801 and EIA/TIA 568-C
- ACMA compliant - RCM
- LSZH outer sheath
- Copper - AWG28
- Suitable for Class EA (10Gbps) networks
- Flexible and extremely easy to work with
- Approx. 50% smaller in diameter than standard CAT6A (3.5mm outer diameter)



Length	Part No. 1	2	Colour
0.3m	660811003	+	
0.5m	660811005		
1.0m	66081101		
1.5m	660811015		
2.0m	66081102		
2.5m	660811025		
3.0m	66081103		
5.0m	66081105		
7.0m	66081107		
10.0m	66081110		
			BLU Blue

Ex. Mini category 6A U/UTP patch cord, 1.5m, blue: P/N 660811015BLU

Category 6 unshielded patch cords, mini, AWG28, U/UTP, LSZH

Mini category 6 U/UTP patch cords provide a superior solution when compared to standard category 6 U/UTP patch cords. Mini category 6 unshielded patch cords provide the same high level of performance as standard category 6 patch cords, with the added benefit of being 50% smaller in diameter. In addition, the flexible LSZH outer sheath enables the patch cords to be easily routed and connected into patching fields.

- Meets category 6 channel link performance specifications as per ISO/IEC 11801 and ANSI/TIA 568-C.2
- ACMA compliant, RCM tick
- LSZH outer sheath
- Copper – AWG28
- Suitable for Class E (1Gbps) networks
- Flexible and extremely easy to work with
- 50% smaller in diameter than standard category 6 (3.5mm outer diameter)
- Note - permanent link de-rating required

50% smaller in diameter

12 Mini CAT6 U/UTP



12 Regular CAT6 U/UTP



Length	Part No. 1	2	Colour
0.3m	660614003		
0.5m	660614005		
1.0m	66061401		
1.5m	660614015		
2.0m	66061402		
2.5m	660614025		
3.0m	66061403		
5.0m	66061405		
7.5m	660614075		
10.0m	66061410		
		BLU	Blue
		GRY	Grey
		WHT	White
		GRN	Green
		YEL	Yellow
		RED	Red
		BLK	Black
		PNK	Pink

Ex. Mini category 6 U/UTP patch cord, 0.5m, black: P/N 66061405BLK

Category 6A shielded patch cords, S/FTP, LSZH

Category 6A shielded patch cords (S/FTP) allow for data transmission between patch panels, outlets and/or IT equipment. Shielded S/FTP patch cords feature an outer shielded braid, covering individually shielded pairs, providing optimum protection against EMI.

- Snagless moulded patch cords - category 6A – 500 MHz, 10G
- Category 6A shielded – S/FTP
- Suitable for 10G Ethernet
- LSZH outer sheath
- ACMA compliant – RCM
- Complies with ISO/IEC 11801 and ANSI/TIA 568-C.2
- RJ45 High performance category 6A special insert bar on two levels for NEXT compensation
- 100% component compliant



Length	Part No. 1	2	Colour
0.5m	660831005		
1.0m	66083101		
1.5m	660831015		
2.0m	66083102		
3.0m	66083103		
5.0m	66083105		
7.5m	660831075		
10.0m	66083110		
15.0m	66083115		
		BLU	Blue
		GRY	Grey
		WHT	White
		GRN	Green
		YEL	Yellow
		RED	Red
		BLK	Black
		PNK	Pink

Ex. Category 6A S/FTP patch cord, 1.5m, blue: P/N 660831015BLU

Category 6A unshielded patch cords, U/UTP, LSZH

Category 6A unshielded patch cords (U/UTP) allow for data transmission between patch panels, outlets and/or IT equipment.

- Snagless moulded patch cords - category 6A – 500 MHz, 10G
- Category 6A unshielded – U/UTP
- Suitable for 10G Ethernet
- LSZH outer sheath
- ACMA compliant – RCM
- Complies with ISO/IEC 11801 and ANSI/TIA 568-C.2
- RJ45 High performance category 6A special insert bar on two levels for NEXT compensation
- 100% component compliant
- PE cross separator to reduce crosstalk



Length	Part No. 1	2	Colour
0.5m	660851005	+	BLU GRY Blue Grey
1.0m	66085101		
2.0m	66085102		
3.0m	66085103		
5.0m	66085105		
7.5m	660851075		
10.0m	66085110		
15.0m	66085115		

Ex. Category 6A S/FTP patch cord, 1.5m, blue: P/N 660831015BLU

Category 6 unshielded patch cords, U/UTP, LSZH

- Snagless moulded patch cords - category 6 – 500 MHz, 10G
- Category 6 unshielded – U/UTP
- Suitable for 10G Ethernet
- LSZH outer sheath
- ACMA compliant – RCM
- Complies with ISO/IEC 11801 and ANSI/TIA 568-C.2
- RJ45 High performance category 6 special insert bar on two levels for NEXT compensation
- 100% component compliant
- PE cross separator to reduce crosstalk



Length	Part No. 1	2	Colour
0.5m	660611005	+	BLU Blue
1.0m	66061101		
1.5m	660611015		
2.0m	66061102		
2.5m	660611025		
3.0m	66061103		
5.0m	66061105		
7.5m	660611075		
10.0m	66061110		
15.0m	66061115		

Standard category 6 diameter patch cord also available.

LAN cables

Category 5E aerial cable

Category 5E, Aerial Cable, IBC Intra Building Cable has an Aerial Bearer in it to allow for overhead installation applications. Supplied in 305m reel.

- Aerial cable
- Intra building cable (IBC) has an aerial bearer in it to allow for overhead installation applications
- Supplied in a 305m reel
- Foil shielded
- Colour - black



Part No.	Description
66113088	Category 5E, 4 pair, IBC messenger 305m reel

Category 6 U/UTP underground/outdoor cable

This PE sheath Category 6 U/UTP (Unshielded twisted pairs) cable is suitable for outdoor and underground environments.

The performances of this cable exceed the current standards and its use with WBT/ HypaConnect connectors ensures conformity with Class E channel.

Underground/Outdoor cable is gel-filled to prevent water ingress and is tested and are manufactured to exceed Australian standards.

- Gel filled
- Outdoor and underground applications
- UTP, 4-Twisted Pairs, Al-Foil and Mylar tape (FTP)
- Colour - black
- Unshielded copper twisted pairs
- 23AWG copper conductor size
- PE outer sheath
- Supplied in a 305m drum
- Meets or exceeds transmission performance requirements of ISO/ IEC 11801 and ANSI/TIA 568-C.2
- Class E network performance
- ACMA compliant – RCM
- Flexible and easy to install
- Available as part of a full connectivity solution



Part No.	Description
66110063	Category 6, U/UTP, 4 PAIR, 23AWG LAN, black, 305m drum

Types of twisted pair cables



S/FTP
Overall braid screen (S),
Elements foil screened (FTP)



F/UTP
Overall foil screen (F),
Elements unscreened (UTP)



SF/UTP
Overall braid and foil screen (SF),
Elements unscreened (UTP)

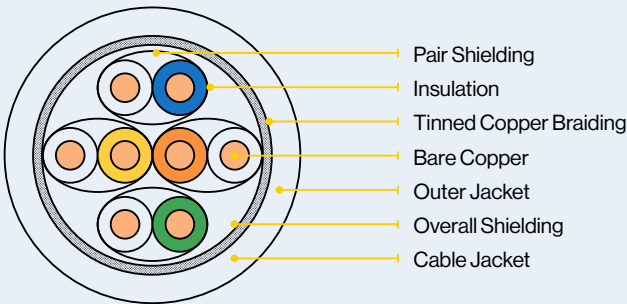


U/UTP
No overall screen (U),
Elements unscreened (UTP)

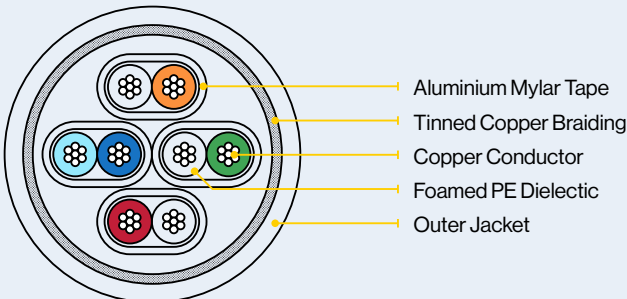


U/FTP
No overall screen (U),
Elements foil screened (FTP)

Solid



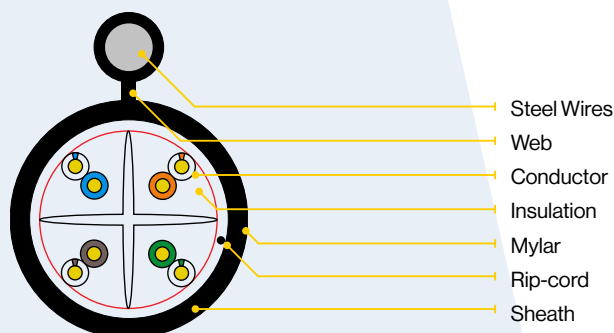
Stranded



Category 6 U/UTP aerial cable, IBC messenger (with steel wire)

Category 6, Aerial Cable, IBC Intra Building Cable has an Aerial Bearer in it to allow it to be installed in overhead applications.

Supplied in 305m reel.

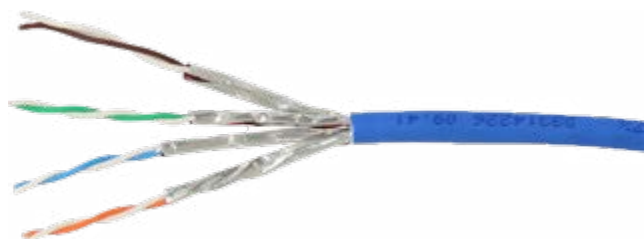


Part No.	Description
66110064	Category 6, U/UTP, black, 305m drum

Category 6A U/FTP cable

Category 6A, U/FTP LAN cables are produced using a 4 x 2 x 23 AWG copper wire structure to a class EA standard and supports up to 10Gbps at 500 MHz. Foil protection surrounding each copper pair makes this cable the ideal solution for horizontal and backbone installations without a risk of cross talk interference with other cables and surrounding equipment.

- U/FTP cable – each pair is foil shielded for extra protection
- Exceeds standards ISO/IEC 11801 and ANSI/TIA 568-C.2 for Category 6A and Class EA
- RoHS / REACH
- LSZH high quality outer sheath - NOT PVC
- Guaranteed to support up to 10 Gigabit Ethernet
- Available in 305m drums
- Provides superior protection against cross talk and EMI
- Solution is part of the HypaConnect 25-year Integrated Cabling Solution Warranty

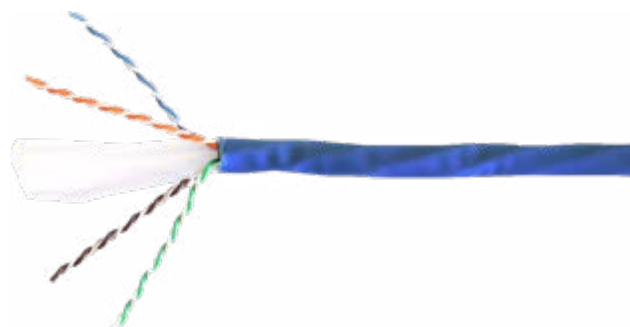


Part No.	Description
66110033	Category 6A U/FTP, 4 PAIR, 23AWG LAN, blue, LSZH, 305m drum
66110062	Category 6A U/FTP, 4 pair, 23AWG LAN, blue, LSZH, 500m drum

Category 6A U/UTP cable

Category 6A unshielded twisted pair (U/UTP) cables are produced using a 4 x 2 x 23 AWG copper wire structure to a class EA standard, and supports protocols up to 500 MHz. It is ideal for horizontal and backbone installations.

- 305m drum
- Colour – blue
- AWG23
- Unshielded twisted pair
- Exceeds ISO/IEC 11801 and ANSI/TIA 568-C.2 performance
- ACMA compliant - RCM
- LSZH sheath



Part No.	Description
66110023	Category 6A U/UTP, 4 pair, 23AWG LAN, aqua, LSZH, 305m drum
66110023BLU	Category 6A U/UTP, 4 pair, 23AWG LAN, blue, LSZH, 305m drum

Category 6A F/UTP cable

Category 6A shielded twisted pair (F/UTP) cables are produced using a 4 x 2 x 23 AWG copper wire structure to a class EA standard, and supports protocols up to 500MHz. It is ideal for horizontal and backbone installations. Ideal for environments where heavy external interference can disrupt signals such as EMI.

- 305 or 500m drums
- Colours – violet, blue
- AWG23
- Overall foil shielded
- Exceeds ISO/IEC 11801 and ANSI/TIA 568-C.2 performance
- ACMA compliant - RCM
- LSZH sheath

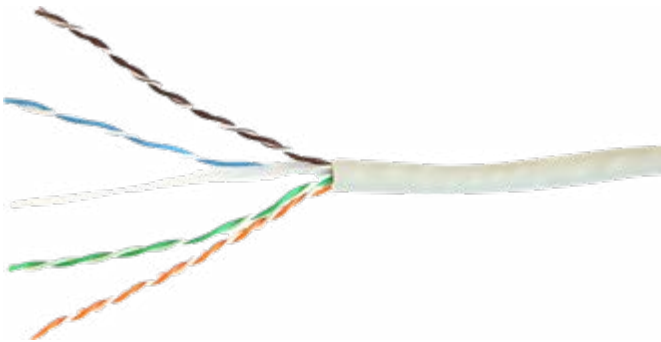


Part No.	Description
66110022	Category 6A F/UTP, 4 pair, 23AWG LAN, violet, LSZH, 305m drum
66110022BLU	Category 6A F/UTP, 4 pair, 23AWG LAN, blue, LSZH, 305m drum

Category 6 U/UTP cable

U/UTP (Unshielded twisted pairs) cable, which is used in a horizontal or vertical configuration (Backbone), constitutes the base of a very high bit rate V.D.I. (Voice-Data-Image) network. The performance of this cable exceeds the current standards and its use with WBT/HypaConnect connectors ensures conformity with Class E channel. This cable is used for transmission of digital and analogue voice, data and video signals.

- 305m box
- Specially designed speed reel box for easy unspooling and deployment of cables
- LSZH
- Colours: grey, blue, red, yellow, black
- AWG23
- Unshielded
- Exceeds ISO/IEC 11801 and ANSI/TIA 568-C.2 performance
- ACMA compliant - RCM



***Other cable options are available including category 6A, category 6 outdoor cables.**

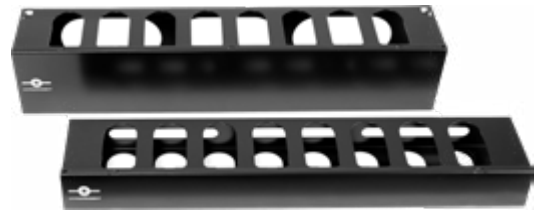
Part No.	Description
66110006	Category 6 U/UTP, 4 PAIR, 23AWG LAN, grey, LSZH, 305m box
66110051	Category 6 U/UTP, 4 PAIR, 23AWG LAN, black, LSZH, 305m box
66110052	Category 6 U/UTP, 4 PAIR, 23AWG LAN, red, LSZH, 305m box
66110053	Category 6 U/UTP, 4 PAIR, 23AWG LAN, yellow, LSZH, 305m box
66110054	Category 6 U/UTP, 4 PAIR, 23AWG LAN, blue, LSZH, 305m box
66110066	Category 6 U/UTP, 4 PAIR, 23AWG LAN, pink, LSZH, 305m box

Cable management

1RU / 2RU, 19" rack mount cable management rail

This slotted 1RU / 2RU rack mount cable management rail will keep your rack tidy and your cables organised. The management rail has two large openings at the rear allowing for cable entry and exit. The cover easily slides on and off for easy additions and management of your patch leads. It consists of a base with management rings and cover, and comes with a clip-on cover to keep your cables neat and organised.

- Simple cable management
- Separate entry and exit openings from rear
- Includes slide on cover
- Hides cables, ensuring a neat and tidy appearance
- Includes mounting fasteners



Part No.	Description
TC400CMR1	1RU 19" rack mount cable management rail, 65mm deep x 485mm wide, mild steel, black
TC400CMR2	2RU 19" rack mount cable management rail, 65mm deep x 485mm wide, mild steel, black

1RU / 2RU, 19" blanking panel rack mountable

Fill up unused RU's rack units in your server racks with the 1RU / 2RU 19" rack mounted blanking panels. Made from powder coated steel.

- Protect equipment from dust ingress
- Cabinets look neat with no gaps
- Robust metal construction
- Includes mounting fasteners
- Main use for blanking panels is to seal airflow for hot / cold aisles
- Increase energy efficiency



Part No.	Description
TC402BP	1RU blanking panel, rack mountable 19", 485mm wide, plastic, black
TC400BP1	1RU blanking panel, rack mountable 19", 485mm wide, mild steel, black
TC400BP2	2RU blanking panel, rack mountable 19", 485mm wide, mild steel, black

1RU, 19" patch cord guide unit - 5 ring

The 1RU, 5 ring cable management panel is typically used to guide and locate various cables going to rack mounted transmission equipment. This lightweight and strong design can safely and neatly hold many cords in the five, openable style, guiding/securing clips provided. The Guide Unit ensures maximum space is available in the rack for the cooling air stream. The guide unit fits a 19" rack. However, extension brackets, for 21" and 23" mount are available separately. If required, hook and loop style ties available separately.

- Easy cabling management
- Separate entry and exit openings
- Includes metal management rings and cover
- Hides cables, to allow for a clean cut look
- Includes mounting equipment



Part No.	Description
TC400RLP102	1RU, cable management guiding unit, 482mm wide x 44mm high x 91mm deep, mild steel & class filled nylon, black

Tools & accessories

Mounting rail adaptor

The DIN rail mount adaptor allows for specialized mounting of HY Series RJ45 jacks and couplers. It is a practical solution where DIN mounting rails are present and is easy to install.

- Accepts HY Series RJ45 modular jacks and couplers
- DIN rail mount
- Steel construction

Part No.	Description
66222027	DIN mounting rail adaptor for RJ45 jacks and couplers



Cable stripping & terminating tool

The HY series terminating tool allows for easy cable preparation and connector termination of HypaConnect HY series jacks. Easy to use and lightweight, this tool simplifies network deployment.

- Proprietary tool for HY termination
- Allows termination for HY jacks – category 6A, category 6
- Equipped with blade to strip the cable
- Measurement scale for correct stripping



Part No.	Description
62X35	HypaConnect cable stripping & terminating tool

Cut & termination tools for Category 6A/6 Jacks

Part No.	Description
62x45	EZ Termination Keystone Jack Tool
62x46	EZ Termination Keystone Jack Tool



Parallel crimping tool for Category 6A/6 jacks

Parallel Crimping Pliers provide the convenience, efficiency and harmlessness approach to crimp the toolless RJ45 Keystone Jack, Terminal Field Plug and familiar type connectors on the cable, help installer to make sure IDCs are surely connected with wires.

The installer can get the excellent quality and easy to use this Parallel Crimping Pliers, just need to hold the handle and press to successfully clamp the wire and the connectors tightly together and save installation effort and cost.

This Parallel Crimping Pliers are designed with patent and it is welcomed by professional installers who could install quite a number of tool-less jacks and plugs in one project.



Part No.	Description
62x44	Parallel Crimping Pliers for RJ45 Keystone Jacks, RoHS compliant.

WARREN & BROWN TECHNOLOGIES PTY LTD

**108 Mitchell Street,
Maidstone, Victoria 3012**

Phone: (613) 9317 6888

Fax: (613) 9318 6091

Email: sales@wbt.com.au

Europe

WTB Europe BV

Energieweg 45,
1271 EC Huizen,
The Netherlands

Phone: +31 35 2085653

Email: htovar@wbt.biz
dkoning@wbt.biz

Philippines

Warren & Brown Fiber Systems Corporation

BDG Building 2, Block 1, Lot 1,
Solid Street, LIIP, Mamplasan,
Binan 4024, Laguna,
Philippines

Phone: +63 2 584 4617
+63 2 584 4510

Fax: +63 49 508 0011

Email: deoperff@warrenandbrown.com.au

Vietnam

Warren & Brown Technologies Pty Ltd

R.02-11, 2nd Floor, D2 Building,
Mandarin Garden, Hoang
Minh Giam Str., Cau Giay
District, Hanoi 10000, Vietnam

Phone: +84 4 6664 3388

Fax: +84 4 6664 3888

Email: wbtvn@warrenandbrown.com.au

New Zealand

AC-WB Technologies

7 Old Wairoa Road, Papakura,
Auckland, New Zealand

Phone: +64 9 302 2668

Fax: +64 9 302 2678

Email: sales@actechnologies.co.nz

New South Wales

JCS-WB Technologies Pty Ltd

Unit 2, 2 Holker Street,
Newington, NSW 2127

Phone: +61 2 8878 6600

Fax: +61 2 9808 2622

Email: sales@jcs-wbt.com.au